



GLUETEC GROUP

Strong bonds.

BUSINESS MODELS



More than adhesives. Adhesive expertise.

Full service for industrial adhesives, sealants and aerosols.

The GLUETEC GROUP is the right partner for integrated adhesive solutions in the B2B environment.

Our own audit management ensures the highest quality standards.



Research & Development



Production & Filling



Adhesives & Sealants



Packaging technology



Design & Private Label

MORE THAN 20 YEARS OF ADHESIVE EXPERTISE

- 3 locations in Europe: Germany, Poland and Slovenia
- **€12.1 million annual turnover in 2018**
- 66 Employees
- A supplier for adhesives, sealants and aerosols
- About 100 adhesives & sealants as well as 50 aerosols in the assortment
- In-house research, formulation development and production



GLUETEC GROUP



WIKO POLAND

WIKO Klebtechnik Sp. zo.o.

Production & Sales

GLUETEC GERMANY

GLUETEC Industrieklebstoffe GmbH & Co. KG

Development & Management

GLUETEC SLOVENIA

GLUETEC d.o.o.

Sales South-East-Europe



QUALITY & CERTIFICATIONS



Integrated management system with high-level structure

- Quality assurance: close-meshed supplier audits ensure the highest quality standards
 - Test methods according to international standards
 - Active quality management and process optimization
 - Responsible hazardous substances and occupational safety management
- ✓ Environmental Management DIN ISO 14001:2015
 - ✓ Quality Management DIN ISO 9001:2015
 - ✓ DVGW – type examination certificate (gas equipment and water heating equipment)
 - ✓ Hazard Level H3 classification (for rail vehicle) : DIN EN 45545-2
 - ✓ GEV-EMICODE for very low emissions
 - ✓ ISEGA and FABES - about the compliance of the migration behavior with European and German food contact legislation



ADHESIVES: EXPERT ADVICE



- We accompany you through all steps
 - Optimal product selection
 - Target group-oriented design
 - User-friendly packaging
 - Hazardous substance labelling, UFI code
 - Safety data sheets
- Technical application advice
 - Processing
 - Storage
 - On-site consultation



YOUR BENEFITS



GLUETEC IS YOUR STRONG PARTNER



- ✓ The supplier of the market leaders
- ✓ Highest quality standards
- ✓ Full service: You can fully concentrate on your core business
- ✓ The solution finder - we accept every challenge
- ✓ Your loyal partner: competent and reliable with decades of industry experience

HISTORY



**COURAGEOUS.
DETERMINED.
CONSISTENT.**

- 1997 Foundation WIKO e.K., Germany
- 2000 Foundation GLUETEC GmbH & Co.KG, Germany
- 2004 Investment in the first filling machine
- 2005 Foundation WIKO KLEBETECHNIK Sp.zo.o., Poland
- 2012 Foundation GLUETEC d.o.o., Slovenia and merging of the German subsidiaries
- 2016 New building of the subsidiary in Poland and large investments in production equipment for filling & bottling
- 2018 GLUETEC GROUP: Merging of the three locations
- 2019 Investment in new R & D department: development of own polyurethane formulations



Expertise and flexibility for individual solutions

- Headquarter since 2000
- R&D adhesive development
- Comprehensive and expert application advice
- Project Management & Sales Engineering
- Graphics & Design
- Packaging technology
- Application engineering





Production site for large-scale production filling

- Production with the most modern machinery
 - Consistently high quality
 - Automatic, process-monitored filling
- Quality and testing laboratory
- Maximum efficiency and best-price solutions
- Consulting & regional distribution
- Central in Europe: short distances to your production facilities



On-site advice and service

- Regional sales office for Austria and South-East Europe
- Consulting & regional distribution
- Close to the market, close to the customer
- Wide industry coverage
- Central location: short distances to your production facilities

SECTORS



INDUSTRY, HAND CRAFT & TRADE



APPLICATIONS



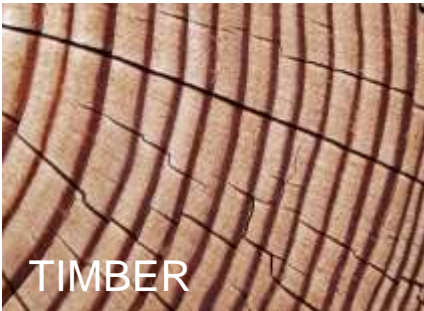
COMPOSITES

A close-up photograph of a dark, woven composite material, possibly carbon fiber or Kevlar, showing a grid-like pattern of fibers.

METALS

A photograph of a metallic spiral or turbine-like structure, showing a smooth, curved surface with a brushed metal finish.

ELASTOMERS

A photograph of a dense collection of small, grey, ring-shaped elastomer components, possibly O-rings or seals.

TIMBER

A photograph of a wooden surface, showing the natural grain and texture of the timber.

STONE

A photograph of a rough, grey stone surface, showing natural cracks and textures.

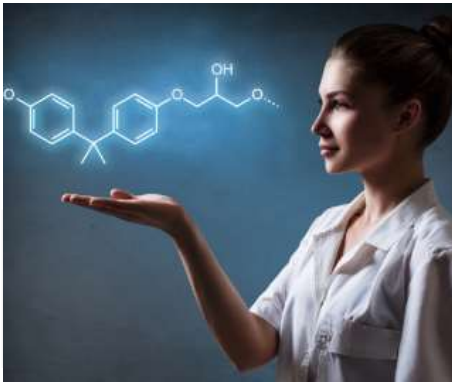
PLASTICS

A photograph of several white plastic components, possibly connectors or fasteners, arranged in a cluster.

GLASS

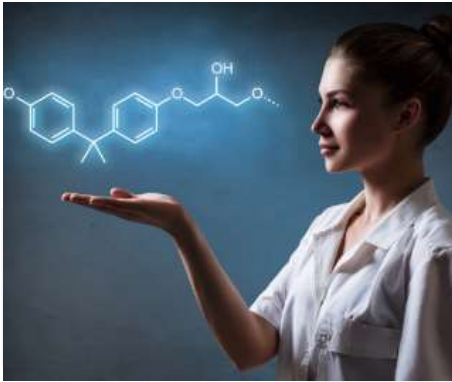
A photograph of a textured glass surface, showing a pattern of small, irregular bubbles or imperfections.

ADHESIVE DEVELOPMENT



- ✓ Specially developed new formulations with unique selling points for the adhesives of the future
- ✓ Highly reactive polyurethanes with low labelling ("cancer-free PUs") on a patented technology
- ✓ Maximum performance without carcinogenic ingredients
- ✓ Product development of 2K systems for fast (10 seconds open time) and slow (up to 10 minutes) adhesives
- ✓ Development in DE, production in PL

DEVELOPMENT PROJECTS



- ✓ Development partner of publicly funded research projects
- ✓ Hyperelastic, low-label polyurethane adhesives for interior fittings in rail vehicles
- ✓ Highly reactive, low-label polyurethane structural adhesives
- ✓ Flame-retardant acrylate adhesives (UL94 - HB certified)
- ✓ UV-curing acrylate/epoxy resins for the production of composite materials (CCC Cold Cure Composites)

PRODUCTION & FILLING TECHNOLOGY



PRODUCTION

- Bubble-free production
- Maximum production efficiency
- State-of-the-art machinery: precise, automated and SPC-controlled

CONTRACT FILLING

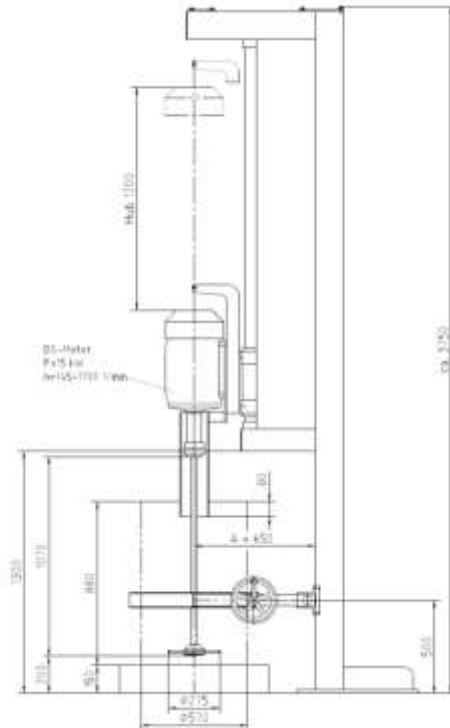
- Filling of 1-component and 2-component adhesives
- Flowing processes just-in-time
- Consistently high quality: certified processes, active quality management and continuous material monitoring
- Individual small series also possible

CONTRACT LABELING

- Sheet and roll labels
- Imprint of batch number, filling date and MHD
- High-quality and optically perfect appearance of your brand

DISSOLVER: VOLLRATH-Dissolver, Typ VDWG 20

- Control Siemens IP54
- Stroke length 1,200 mm
- 15 kW three-phase motor
- Batch size: 70 l -180 l
- Capacity per shift: 4 batches a 200 l
- Dissolver disc VA, Ø 275 mm



Highest production efficiency for large-scale series

PERFORMANCE PROFILE: 2C FULLY AUTOMATIC FILLING LINE

- Annual capacity: 8 million pieces with three shift working
- SPC-controlled production with internal weight monitoring
- Automatically labelling with ink printing on label or base body



Highest production efficiency for large-scale series





PERFORMANCE PROFILE: 2C FULLY AUTOMATIC FILLING LINE

- Viscosity range : 100 mPas to very high viscous liquids/pastes, abrasive & non abrasive liquids
- Adhesives & reactive resins: Methylmethacrylates, acrylates, epoxy resins, polyurethanes (other chemicals on request)
- Packaging types: universal use of syringes and cartridges, all shapes and sizes can be realized with individual tool carriers
- GLUETEC cartridges / best-cost-solutions
 - 25 ml syringe 1:1
 - 250 ml cartridge 10:1
 - 50 ml cartridge 1:1
 - 400 ml cartridge 1:1
 - 200 ml cartridge 1:1
 - 490 ml cartridge 10:1

Highest production efficiency for large-scale series

Member of

GLUETEC GROUP

Germany | Poland | Slovenia

WIKO POLAND







PERFORMANCE PROFILE: 2C HALF AUTOMATIC FILLING LINE

- Annual capacity: 2 million pieces with three shift working
- Viscosity range: 100 mPas till very high viscous liquids/pastes . Capable for non abrasive liquids
- Adhesives/reactive resins: Methylmethacrylates, acrylates, epoxy resins, polyurethanes (other chemicals on request)
- Packaging types: universal use of syringes and cartridges, all shapes and sizes can be realized with individual tool carriers
- GLUETEC syringes / best-cost-solutions
 - 10 ml syringe 10:1 37 ml syringe 10:1 45 ml syringe 10:1 50 ml syringe 10:1

Highest production efficiency for large-scale series



PERFORMANCE PROFILE: 1C FULLY AUTOMATIC FILLING LINE

- Annual capacity: 10 million pieces with three shift working
- Viscosity range: 15 mPas to 200.000 mPas
- Cyanoacrylates, anaerobic adhesives
- SPC-controlled production with internal weight monitoring
- GLUETEC bottles with different shapes and caps / best-cost-solutions
 - 3 ml bottle 5 ml bottle 10 ml bottle 20 ml bottle 50 ml bottle

Highest production efficiency for large-scale series

POWERFUL BRANDS.

The logo for Wiko, with the word 'Wiko' in a bold, sans-serif font. The 'W' is white with a red outline, and the 'iko' is solid red. There are three horizontal red lines above the 'W'.The logo for Weldyx, with the word 'WELD YX' in a bold, sans-serif font. The 'WELD' is in black and 'YX' is in grey. A black swoosh underline is positioned below the text.

- ✓ High product variety
- ✓ Well-known quality brands
- ✓ Proven product portfolio
- ✓ Complete and punctual delivery
- ✓ Tailor-made packaging
- ✓ Scalable quantities

ADHESIVES



WIKO®

CHEMICAL-TECHNICAL QUALITY PRODUCTS



- Products for production and repair
- Solutions for industry, commerce and trade
- Cyanoacrylates, anaerobes, epoxy resin adhesives, securing lacquers, MS polymers, silicones, aerosols, pastes, tapes
- Strong in the private label sector

More information: [WIKO catalogue](#)

WELDYX®

HIGH PERFORMANCE FOR STRUCTURAL BONDING



- Industrial high-tech solutions for special applications
- Application mainly in automotive and railway industry
- 2-component structural adhesives based on methyl methacrylates
- Certificates: ISEGA - Declaration of No Objection and Railway Approval: Hazard Level H3, DIN EN 45545-2, R1
- Order quantities per customer between 5 - 25 tons

More information: [WELDYX catalogue](#)

INNOVATIVE PACKAGING SOLUTIONS AND SPECIAL CARTRIDGES.



- Large selection of user-friendly containers and packagings for manual use
- Individual packaging concepts
 - Dosing solutions, cartridges, syringes, cans, bottles
 - Blister, foil bags
 - Boxes and outer cartons



GRAPHICS & DESIGN

- Individual product design for your brand
- Own in-house design department in Germany
- Design and printing of labels, cardboard boxes, displays and package inserts



LABELS

- Small series: sheet labels for manual labelling
- Large series: roll labels for machine labelling
- Order after print approval
- Production transfer and monitoring
- Incoming goods inspection and storage

SUCCESS FACTOR PRIVATE LABELS

- ✓ No capital commitment: cost reduction for financing, machines, warehouse and personnel
- ✓ Maximum economy: smallest quantities from 1000 pcs.
- ✓ Maximum flexibility: permanent availability of articles
- ✓ Individual service according to your needs: fast, convenient and flexible
- ✓ Always up-to-date: implement current trends quickly and professionally



STRONG BONDS.



CONTACT

GLUETEC Industrieklebstoffe GmbH & Co. KG

Am Biotop 8a

D-97259 Greußenheim

Telefon: +49 9369 9836-0

Telefax: +49 9369 9836-10

E-Mail: info@gluetec.de

Web: www.gluetec.de